


## Adjustment with PC and software duo link 400.054.00 and USB cable - Sub D9

Allows optimal *duo dynamic* adjustment



- Check that all cables are correctly connected and the central unit powered on
- Connect PC to central unit with USB/RS232 cable
- Launch **duo link** - Select the « **General** » tab - Click on « **Lecture** »
  - . If message “ *Le port COM est déjà ouvert ou n'existe pas* ”, click « **Liaison série** » 
  - From the *Port* drop-down list : - Select a COM port - « **OK** » - « **Lecture** »
  - . Displays parameters currently stored in the central unit
- We recommend making adjustments to a single way, disabling the second  
Uncheck the « **Client → Agent** », box and click « **Appliquer** »
- All changes are saved in central unit when you click on « **Appliquer** »

### 1. Setting the Agent → Customer Channel

- Select the « **Agent → Client** »
- Speak on the agent side at different distances from the microphone
- Adjust micro agent sensitivity (optimal range between 35 and 50)
- Adjust customer HP volume (optimal range between 40 and 60)
- We recommend lowering the volume when sensitivity is increased and inversely
- No customer-side boost
- Select the auto-standby time of the micro agent (3/6/9 seconds) « *mise en veille automatique...* »
- Trigger threshold (default 12) « *Seuil de déclenchement* »

### 2. Setting the Customer → Agent Channel

- Disable the « **Agent → Client** » channel and activate the « **Client → Agent** » channel
- Select the « **Client → Agent** » tab
- Speak on the customer side at different distances from the microphone
- Set micro client sensitivity
- Adjust HP agent volume
- Agent side booster (HP agent volume amplified, red LED on microphone unit)  
Try **duo dynamic** in normal mode and booster mode.
- Select the auto-standby time of the micro agent (3/6/9 seconds) « *mise en veille automatique...* »
- Trigger threshold (default 12) « *Seuil de déclenchement* »
- Activate the « **Agent → Client** » channel

### 3. Filter adjustment

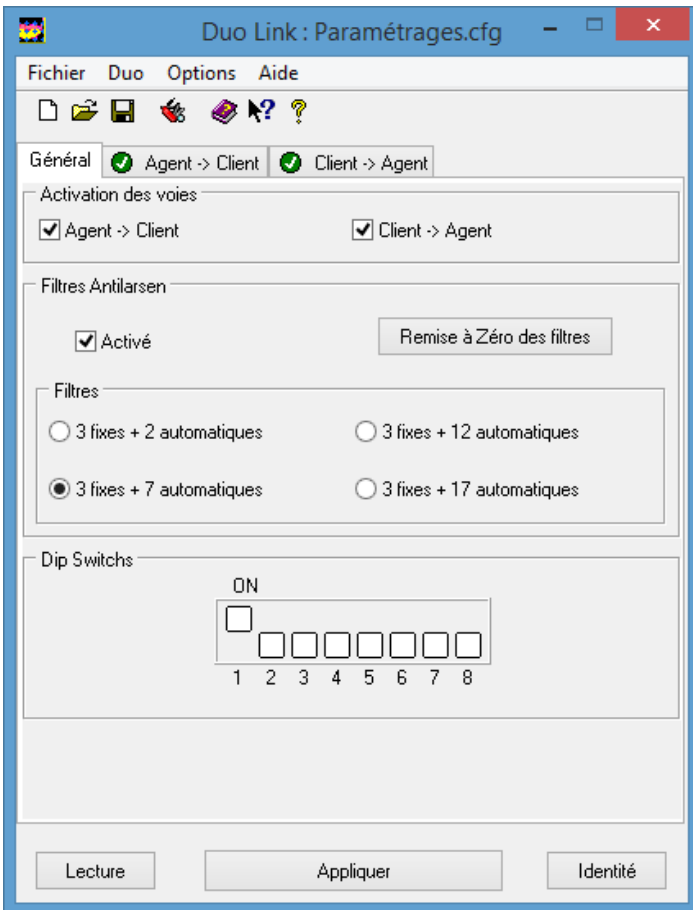
- On « **General** » tab
- Select « **3 fixes + 7 automatiques** »
- Take the microphone in hand for a few seconds repeatedly in order to create whistling feedback, filters will automatically adjust

### 4. Save settings

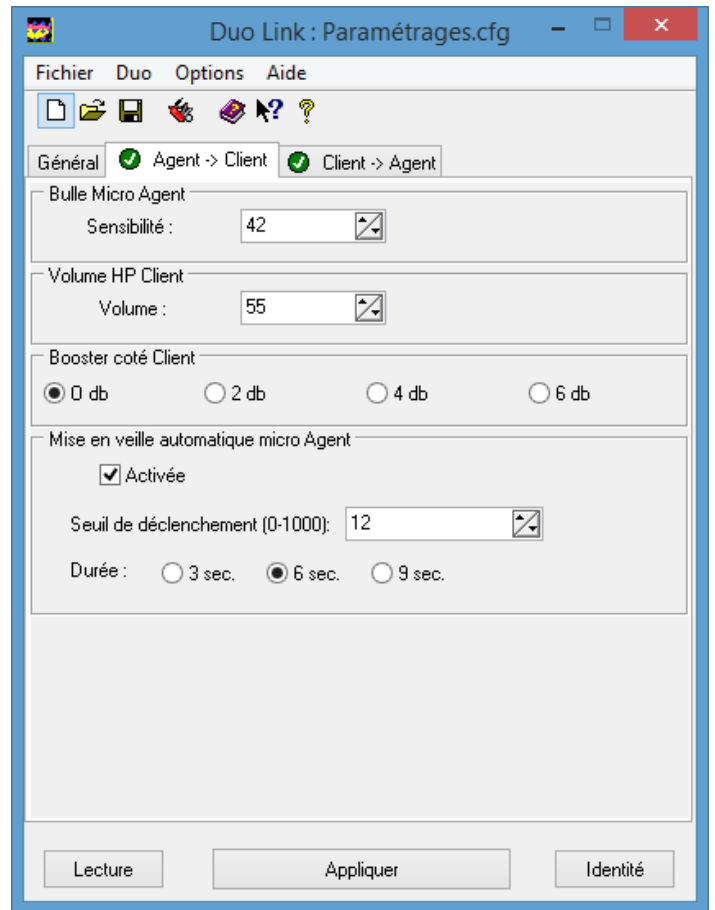
- Once the settings are done, you can save it as a file on your computer
- Click on « **Fichier** » → « **Enregistrer sous** »
- Power off the central unit, disconnect the USB cable, power on and **duo dynamic** is ready to run

**Our after-sales service is at your disposal on 03 88 77 49 75**

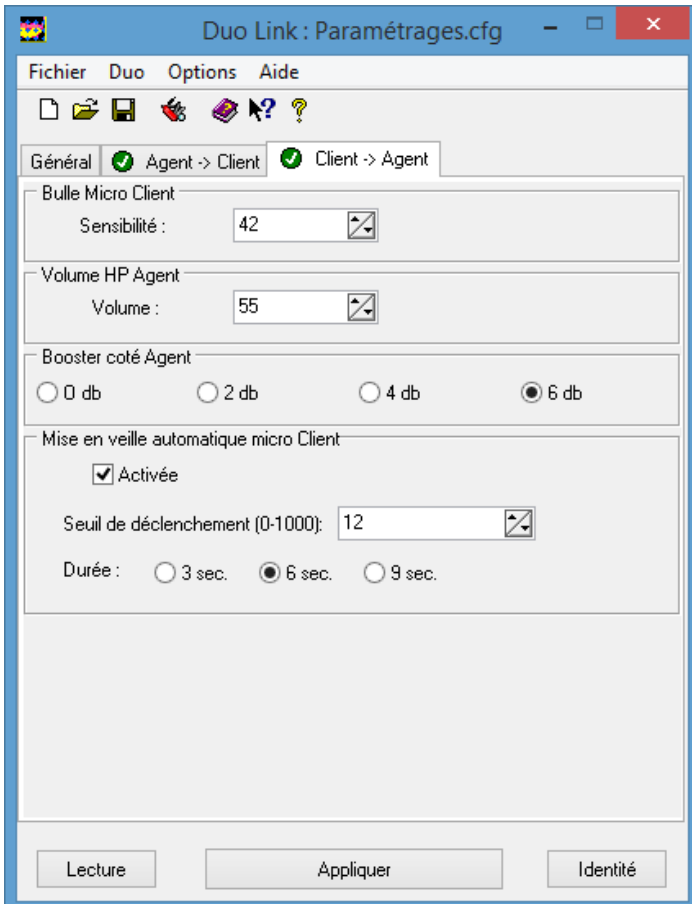
1.



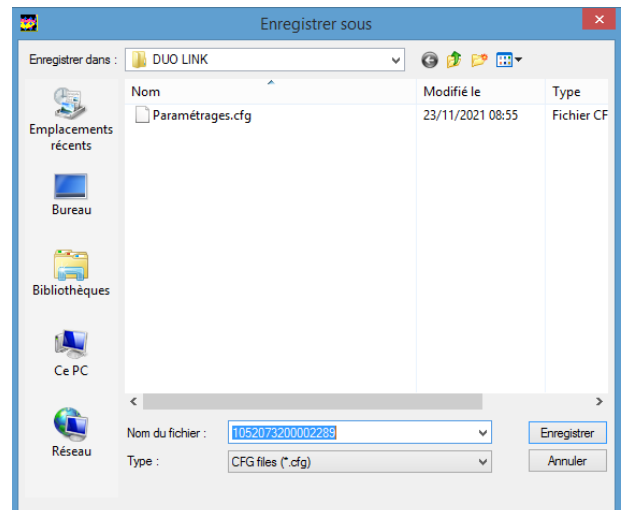
2.



3.



#### 4. Save settings



#### Technical Data :

- Voltage / Curreant 15 V DC - 1,2 A
- Maximum power : 18 W
- Off-mode power consumption : 0,18 W
- Minimum loudspeaker impedance : 20  $\Omega$
- Temperature : 10 - 40°C